



Understands your network...

JDisc Discovery 2.6

Release Notes

Legal Notice

JDisc UG (haftungsbeschränkt) shall not be liable for errors contained herein or for incidental or consequential damages in connection with the furnishing, performance, or use of this material. The information herein is subject to change without notice and is provided "as is" without warranty of any kind. The entire risk arising out of the use of this information remains with recipient. In no event JDisc UG (haftungsbeschränkt) shall be liable for any direct, consequential, incidental, special, punitive, or other damages whatsoever (including without limitation, damages for loss of business profits, business interruption or loss of business information), even if JDisc UG (haftungsbeschränkt) has been advised of the possibility of such damages. The foregoing shall apply regardless of the negligence or other fault of either party and regardless of whether such liability sounds in contract, negligence, tort, or any other theory of legal liability, and notwithstanding any failure of essential purpose of any limited remedy. The limited warranties for JDisc UG (haftungsbeschränkt) products are exclusively set forth in the documentation accompanying such products. Nothing herein should be construed as constituting a further or additional warranty.

Copyright

JDisc UG (haftungsbeschränkt) may have patents or pending patent applications covering subject matter described in this document. The furnishing of this document does not give you any license to these patents. You can send license inquiries, in writing, to:

JDisc UG (haftungsbeschränkt)
Herrenbergerstrasse 35
D-71139 Ehningen
Germany

This document is protected by copyright. All rights are reserved. No part of this document may be photocopied, reproduced, or translated to another language without prior written consent of JDisc UG (haftungsbeschränkt).

All other registered trademarks belong to their respective companies.

© Copyright JDisc UG (haftungsbeschränkt), 2012.

Table of Contents

Release 2.6 – Build 2613.....	6
Release 2.6 – Build 2605.....	6
Release 2.6 - Build 2602.....	6
Release 2.5 - Build 2507.....	8
Release 2.5 - Build 2504.....	9
Release 2.5 - Build 2503.....	9
Release 2.0 - Build 2069.....	10
Release 2.0 - Build 2063.....	11
Release 2.0 - Build 2061.....	11
Release 2.0 - Build 2060.....	11
Release 2.0 - Build 2059.....	12
Release 2.0 - Build 2058.....	12
Release 2.0 - Build 2056.....	12
Release 2.0 - Build 2052.....	13
Release 2.0 - Build 2045.....	13
Release 2.0 - Build 2038.....	13
Release 2.0 - Build 2032.....	14
Release 2.0 - Build 2030.....	14
Release 2.0 - Build 2024.....	15
Release 2.0 - Build 2022.....	15
Release 2.0 - Build 2020.....	16
Release 2.0 - Build 2014.....	16
Release 2.0 - Build 2008.....	16
Release 2.0 - Build 2006.....	17
Release 2.0 - Build 2004.....	17
Release 2.0 - Build 2003.....	17
Release 2.0 - Build 2002.....	17
Release 2.0 - Build 2001.....	18
Release 1.2 - Build 1905.....	19
Release 1.2 - Build 1903.....	19
Release 1.2 - Build 1901.....	19
Release 1.2 - Build 1900.....	20
Release 1.1 - Build 1571.....	20
Release 1.1 - Build 1570.....	20
Release 1.1 - Build 1567.....	20
Release 1.1 - Build 1560.....	21
Release 1.1 - Build 1557.....	21
Release 1.1 - Build 1550.....	21
Release 1.1 - Build 1547.....	22
Release 1.1 - Build 1546.....	22
Release 1.1 - Build 1544.....	22
Release 1.1 - Build 1543.....	23
Release 1.1 - Build 1542.....	23

Release 1.1 - Build 1541.....23
Release 1.1 - Build 1540.....24
Release 1.1 - Build 1539.....24
Release 1.1 - Build 1536.....25

Release 2.6 – Build 2613

Enhanced: Exclusion of User Types

JDisc Discovery can be configured to exclude service/daemon users from being discovered. The new release allows to exclude Windows Service users and built-in users (such as SYSTEM) independently from each other.

Enhanced: Mappings for Lenovo Laptops and Desktops added

New Lenovo laptops and desktops have been added to JDisc's internal lookup tables.

Improved: Performance Improvements for remote login when transferring large files

Transferring large files has been a performance issue with previous releases. This build improves the performance when transferring large files via slow network connections.

Bugfix: Wrong Windows Domain name in rare cases

We experienced, that WMI is delivering the wrong domain name in some cases. Now we prefer domain names that are discovered through NetBIOS or SMB. WMI is only used to determine the domain name if no other protocols returned a valid result.

Release 2.6 – Build 2605

New Feature: Device Naming Conventions

The new device naming algorithm lets you choose any of the following settings:

- Do not modify device names
- Use upper case only for device names
- Use lower case only for device names

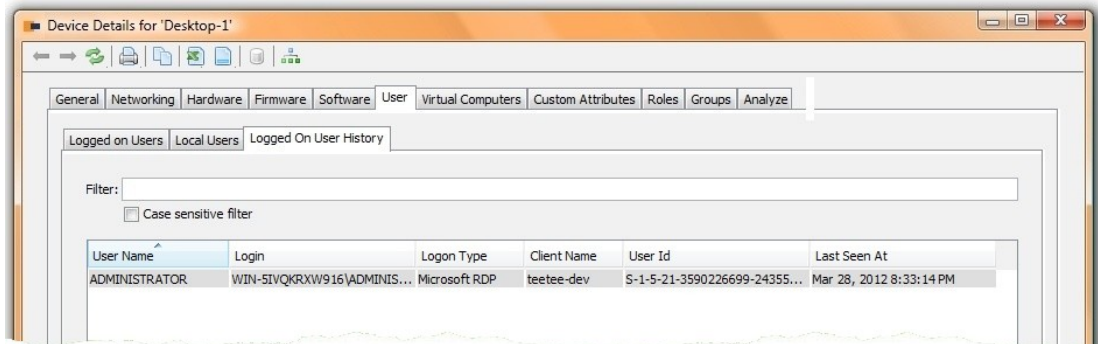
Bugfix: Devices with no information

A bug in the dependency mapping add-on did create empty devices (without any information) in very rare cases.

Release 2.6 - Build 2602

New Feature: Terminal services (Microsoft RDP & Citrix ICA) client discovery

The logged on user discovery can also discover Microsoft RDP and Citrix ICA client computers from which users have logged on to a Windows computer. This new feature requires to enable Windows remote login.



New Feature: Windows Installation Key discovery

JDisc Discovery detects the Windows operating system license key.

New Feature: New report "Duplicate Device Names"

The duplicate device name report (Troubleshooting > Devices > Duplicate Device Names) displays all devices having the same device name.

New Feature: Clone Custom Reports

The new 'Clone' button allows to creating new custom reports based on already existing custom reports.

Improved: Logged on user type detection of Windows computers

JDisc Discovery detects if a user is logged on interactively (console), from a terminal services client (Microsoft RDP or Citrix ICA) or running a service.

Improved: Wyse ThinClient support

Now supporting the discovery of Wyse S30, S10, R10, and Winterm 3000 thin clients using the SNMP protocol.

Improved: Allied Telesyn Switch support

Now supporting the discovery of Allied Telesyn ethernet switches using the SNMP protocol.

Improved: Overland Storage Snap Server 1 support

Now supporting the discovery of Overland Storage Snap Server 1 NAS using the SNMP protocol.

Improved: Part number discovery of Windows, Linux and VMware ESX computers

JDisc Discovery queries the hardware part number (when available in the system management BIOS) of computers running Windows, Linux or VMware ESX using

remote login.

Improved: New diagnostic rules for common Windows configuration problems

New diagnostic rules can detect common Windows configuration problems that negatively affect JDisc Discovery's ability to accurately discover Windows computers.

Bugfix: Regular Expression Search for the Hostname List fixed

A bug in the SQL query that filters hostnames using regular expressions has been fixed.

Bugfix: Custom attribute collection using Windows remote login

The custom attribute collection using Windows remote login sporadically failed due to a race condition when copying executable, command and script files.

Bugfix: Application install location using Windows remote login

The install location of Windows applications has been ignored when Windows remote login has been enabled.

Release 2.5 - Build 2507

Improved: Support for VMware ESXi Servers

VMware ESXi servers are difficult to discover, since they do not provide remote login capabilities using SSH or telnet. However, the VMware API and WBEM protocol provide detailed hardware and software information. All previous JDisc Discovery versions could not discover detailed hardware information using the WBEM protocol from ESXi servers. The most recent JDisc Discovery version collects detailed hardware and software information using VMware's API and the WBEM protocol.

Improved: Network Interface Detection

JDisc Discovery merges network interface information from all protocols (e.g. WMI, SNMP or WBEM). Older JDisc Discovery versions have selected network interfaces from a single protocol such as WMI and ignored network interface information from all other protocols.

Improved: Wyse Terminal Detection improved

The detection of Wyse Thin Clients via SNMP has been improved.

Updated: WBEM Library

The WBEM library used by JDisc Discovery has been upgraded to the latest revision.

Bugfix: Excel Export Workbook Naming

In some cases, JDisc Discovery created workbook names that caused problems when

opening the file using Microsoft Excel. This build fixes this problem by using different workbook names.

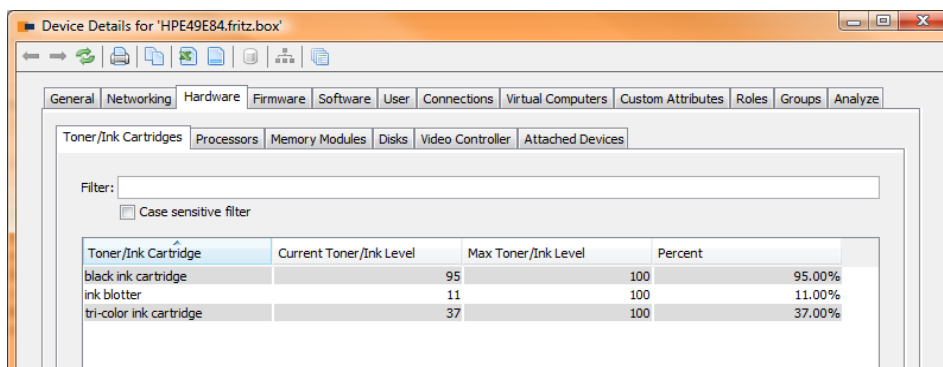
Bugfix: Cisco File Collection

A modification in the remote login classes caused a failure when collecting configuration files from Cisco IOS devices using the enable mode. This problem has been fixed.

Release 2.5 - Build 2504

Collect Printer Ink/Toner Level

Build 2504 adds the capability to detect the toner/ink level on printers. We collect the current level, the maximum level and the percentage. Getting all printers that need a refill is trivial together with our custom reports.



Toner/Ink Cartridge	Current Toner/Ink Level	Max Toner/Ink Level	Percent
black ink cartridge	95	100	95.00%
ink blotter	11	100	11.00%
tri-color ink cartridge	37	100	37.00%

Fig: Printer Usage Information

Automatically detect new license files

JDisc now automatically detects new license files copied to the installation directory and reads them immediately.

Release 2.5 - Build 2503

Migration to 2.5

The new release 2.5 adds the new Device History Add-On to the family of JDisc Discovery products. Review the discovery state in the past for your devices by taking snapshots at any time.

Improved: Printing support added

Print table based reports directly from JDisc Discovery.

Improved: Blackout periods for scheduled discoveries

Define blackout periods for discovery schedules (e.g. run an hourly discovery, but not between 8pm and 6am).

Improved: Support for many new SNMP devices added

JDisc continuously improves its SNMP device detection capabilities. This release is not an exception. We added support for many new SNMP devices including D-Link switches, Kyocera printers, and many other devices.

Updated: VMware API library updated

The VMware API has been updated to the latest revision. This revision saves a execution time and reduces memory consumption during the discovery.

Updated: Postres database updated

The embedded Postgres database has been updated to the latest revision (9.1.2).

Release 2.0 - Build 2069

New Feature: New report "SSH Login Credentials"

The new report "SSH login credentials" lists the SSH keys for every device that have been used to discover a device.

Improved: SNMP device discovery enhanced

JDisc constantly adds new supported SNMP based devices to its discovery. This release adds support for:

- Adva Optical Networking SAN switches

Improved: Custom reporting supports now virtual computers

Our flexible custom reports can list the virtual machines running on a virtual server.

Bugfix: Blade enclosure components and directly attached devices have not been updated properly

Blade enclosure components (for example blade servers, switches or power supplies) and directly attached devices (for example monitors) have not been updated properly when being moved to another blade enclosure or connected to another computer.

Bugfix: CSV Export within the details dialog did not work

The CSV export within the device details dialog failed.

Bugfix: License problem caused problems within the discovery settings

dialog

A licensing problem caused JDisc Discovery's discovery settings dialog to hang with a Small-Business-Edition license.

Release 2.0 - Build 2063

Improved: Solaris LDom discovery

JDisc Discovery identifies Solaris LDom instances using remote execution and associates Solaris LDom instances with their physical Solaris host server.

Improved: Client only installation running in Citrix XenApp environment

The JDisc Discovery client no longer creates registry keys below HKEY_LOCAL_MACHINE\SOFTWARE\JDisc\JDisc Discovery 2.0 on start-up. This has been an issue when running as "normal" user. Moreover, the JDisc Discovery client now creates its log files in the user's %TEMP directory.

Bugfix: JDisc ignored the patched version for Oracle database installations and returned the initial version

The JDisc Discovery server reported the initially installed Oracle version instead of the current version when the database server has been patched.

Release 2.0 - Build 2061

Bugfix: In some rare occasions, the server crashed

The JDisc Discovery server crashed in under some circumstances. The problem is related to the base64 decoding and occurred in very rare occasions.

Release 2.0 - Build 2060

Improved: Windows 8 (Developer Preview) support

JDisc Discovery identifies and collects data from Windows 8 (Developer Preview) systems.

Improved: DNS protocol check

JDisc Discovery probes devices for DNS server implementations and updates the DNS

role assignment accordingly.

Bugfix: Blade enclosure components not stored in the database

Blade enclosure components, such as blade servers or blade switches were not stored in the database if the device type could not be determined or if the serial number has been absent.

Bugfix: Using the "Save" icon when editing custom attributes causes the client to hang.

The client was hanging when clicking the dialog's "Save" icon twice.

Release 2.0 - Build 2059

Bugfix: Windows 7 computers were not detected properly

Windows 7 computers were mistakenly classified as Unidentified device if only the Anonymous NetBIOS protocol has been successful.

Release 2.0 - Build 2058

Updated: The embedded Postgres database has been updated to version 8.4.8

To stay up-to-date with current postgres releases, we updated the previously used version 8.4.4 to 8.4.8.

Release 2.0 - Build 2056

Improved: Discovery Protocol Status report

The Discovery Protocol Status report displays results faster due to using a single complex SQL query instead of running a SQL query for each device.

Improved: Less memory required to start JDisc Discovery's Server service

Previous versions needed 768MB available contiguous memory for JDisc Discovery's Java runtime environment to start properly. Because of this the JDisc Discovery Server service sporadically failed on computers which could not allocate 768MB of contiguous memory. The new version uses the default Java runtime environment memory allocation.

Bugfix: Device with Discovery Status Warnings and Errors reports

The Device with Discovery Status Warnings and Errors reports did not display all devices having warning and errors that were displayed in the Discovery Protocol Status report.

Bugfix: Fixed Logical Disk Overview custom report object for Sun Solaris

The Logical Disk Overview custom report object reported incorrect results for Sun Solaris computers having 'tmpfs' files systems.

Bugfix: WMI Tunnel processes have been temporarily hanging

The WMI Tunnel processes started by JDisc's remote login agent had been temporarily hanging.

Bugfix: JDisc Discovery's setup program might have caused a reboot

JDisc Discovery's setup program did install the 'JDisc Discovery Database Service' and 'JDisc Discovery Server' services using an incorrect error control option which caused the computer to reboot when any of the two services failed to start-up properly.

Release 2.0 - Build 2052

New Feature: License key detection for Microsoft SQL Server 2008 and Office 2010 added

JDisc Discovery now discovers Microsoft SQL Server 2008 and Office 2010 license keys.

New Feature: Determine network interface speed of Sun Solaris systems

JDisc Discovery detects the network interface speed of Sun Solaris systems.

New Feature: More granular discovery data collection settings

The discovery of blade enclosure components and managed devices can be enabled or disabled individually in JDisc Discovery settings.

Bugfix: Custom Reports bug fixed

Custom reports sporadically failed when containing custom attributes.

Bugfix: Discovery of Cent OS Linux systems

The discovery has mistakenly merged Cent OS Linux systems when the interface contained unrecognized/invalid MAC addresses.

Release 2.0 - Build 2045

New Feature: Blade Enclosure assignment for Dell Servers

JDisc Discovery associates Dell blade servers to Dell blade enclosures.

Improved: Many new SNMP devices

Support for many new SNMP devices has been added in build 2045.

Bugfix: Windows Remote Execution compression failed in some cases

In some cases, JDisc's remote login compression failed for larger files. This problem has been resolved in this version.

Release 2.0 - Build 2038

New Feature: ZFS file system detection on Solaris

JDisc Discovery detects ZFS file systems on Solaris.

New Feature: User account reports

These new user account report provide a quick overview about what users exist on which computers.

New Feature: Login credentials reports

The login credentials report displays the user accounts that JDisc Discovery has been using to logon to a computer during the discovery and allows changing the password of a user accounts for all computers at once.

Improved: Option and question dialogs

Option and question dialogs have been improved to include more verbose descriptions.

Improved: SNMP device support

Improved support for several switches and fibre channel switches.

Release 2.0 - Build 2032

New Feature: HP Integrated Lights-Out (iLO) discovery

JDisc Discovery associates HP Integrated Lights-Out (iLO) management devices to the respective HP ProLiant rack or HP ProLiant Blade servers.

Improved: Gentoo Linux Software Discovery

JDisc Discovery has been extended to discover installed software on Gentoo Linux systems using the equery utility.

Bugfix: Windows Remote Execution failed on Windows NT 4.0 / Windows 2000

The JDisc Discovery Remote System Execution Agent failed to start on Windows NT 4.0 and Windows 2000 systems. As a consequence, JDisc Discovery did not collect detailed system information on Windows NT 4.0 systems which do not have the Windows Management Instrumentation (WMI) installed.

New User Account Report

A new user account report lists all user accounts. Change access credentials globally from this dialog for all devices, default accounts, domain, and active directory accounts.

Release 2.0 - Build 2030

New Feature: Apache Tomcat Discovery

JDisc Discovery now detects Apache Tomcat Server installations and creates instances for each running configuration.

Improved Remote Login for Windows

JDisc Discovery uses compression when transferring data between its remote login agent and the discovery server. This reduces the traffic generated by remote login by 50 to 80 percent.

Improved WMI and Windows Registry Tunnel for Windows

Build 2020 introduced a tunnel for WMI and Windows registry data through JDisc's remote login agent. JDisc Discovery has enhanced the tunnel configuration to use the tunnel for WMI and registry only, if the native access fails.

Improved Troubleshooting Rules

JDisc Discovery uses rules to find possible reasons for not satisfactory discovery results. The most frequent failures are for instance invalid access credentials or firewalls blocking the traffic. So far, JDisc Discovery supported a large set of rules for the Windows platform. With this release, the rules have been extended to the Unix platform, Cisco, and HP ProCurve devices.

Release 2.0 - Build 2024

New Feature: Apache WEB Server Discovery

JDisc Discovery now detects Apache WEB Server installations and creates instances for each running configuration.

New Feature: New Document Assignment Report

A new report lists all documents with the devices that it is assigned to.

Enhancement: Improved Oracle Database Instance Discovery

Prior to this build, JDisc was not able to assign running Oracle database instances to the correct installation directory. The new build makes use of the listener.ora file to assign instances to installation directories.

Enhancement: New Troubleshooting Rules for Unix Operating Systems

JDisc maintains a set of rules that help users to troubleshoot access problems. Those rules now include rules for the Unix platforms.

Release 2.0 - Build 2022

Bugfix: Clear Database was broken

Clearing the database did not work properly.

Release 2.0 - Build 2020

New Feature: Tunneling of WMI and Remote Registry protocols

The WMI and remote registry protocols can be tunneled through JDisc's remote login agent. This helps avoiding access problems when firewalls block WMI and remote registry traffic. Moreover the new feature also improves discovery speed for Windows computers up to 8 times (compared to not using remote login and the tunneling options) for slow LANs and wide area networks.

New Feature: License Detection for Veritas (now Symantec) Software

JDisc Discovery detects now the licenses for Veritas software such as cluster manager, volume manager etc. on Unix and Windows.

Bugfix: License Keys for SQL Server installations

The license keys for SQL Server installations were not collected.

Release 2.0 - Build 2014

New Feature: Document Management

Manage your inventory related documents such as support contracts, user manuals, service contracts or operations procedures with JDisc Discovery. Import documents into its database and assign documents to individual devices.

F-Secure Anti Virus Version detection updated

JDisc Discovery did not detect the latest versions of F-Secure's Anti Virus products.

Release 2.0 - Build 2008

Java Virtual Machine Updated

The Java virtual machine has been updated to Java 1.6.0_22.

Bugfix: CSV Export hangs in some cases

In some cases, the CSV export hangs. This problem has been fixed.

Bugfix: Incorrect SQL query created

The custom reports created incorrect SQL queries when selecting logical disk details or video controllers.

Release 2.0 - Build 2006

Cluster Discovery

The discovery of HP Service Guard cluster has been added.

Release 2.0 - Build 2004

Cluster Discovery

The new build of JDisc Discovery detects Veritas Cluster and Microsoft Cluster, its cluster members and the implemented cluster services.

Scheduled Database Backup

Define a maximal number of backup files. Older backup files will be deleted automatically with new database backups.

Bugfix: Process list on MAC OS X didn't work

The process list on MAC OS X was not collected correctly.

Bugfix: Problem identifying the OS for Systems having VMware Virtual Center installed

Systems having VMware Virtual Center installed have falsely been identified as systems running an ESX server!

Release 2.0 - Build 2003

Bugfix: Excel Export for Device Details failed

A bug within the excel export prevented device details to be exported.

Release 2.0 - Build 2002

License Model slightly changed

Prior to build 2002, monitors and other devices not having an IP address have been counted to calculate the number of licensed devices. Now, we are not counting devices without an IP address to calculate the number of licensed devices.

Bugfix: Networking Manual was missing in the installation package

The networking PDF manual was missing in the installation package.

Bugfix: In rare cases, WMI returned access denied for all devices

Due to a incorrect security initialization at startup, the WMI protocol returned WMI access denied for all devices.

Bugfix: Problem in the Active Directory Configuration within the configuration wizard.

The Active Directory section within the configuration wizard did not enable the "Next" button correctly to go to the next screen.

Bugfix: Physical computer was falsely identified as Oracle VirtualBox instance

When there are host only interfaces configured on a VirtualBox installation, then the physical computer was falsely identified as VirtualBox instance.

Release 2.0 - Build 2001

New Networking Add-On

The new Networking Add-On offers network and segment topology discovery and configuration file collection for interconnect devices.

Custom Attribute Collection History

JDisc Discovery maintains custom attributes history regardless if manually edited or automatically collected. The side-by-side difference viewer highlights the changes graphically.

Simplified File Collection

JDisc Discovery offers a simplified configuration for collecting files or system command output. Configuring your own collections has never been as easy as today.

Product ID and Product Key Collection for Microsoft Applications

JDisc Discovery collects product ids and keys for Microsoft Office, SQL Server, and Developer Studio installations.

Scheduled Database Backups

JDisc Discovery creates a backup of your database on configurable intervals.

Scheduled Database Compacts

Databases grow over time and usually become slower when executing insert, delete or update statements. This is why JDisc offers the scheduled compact feature to automatically compact the database according the configured schedule.

Archive Database while the Discovery is running

You do no longer need to stop the application to archive the database. Archiving is even possible while the discovery is running.

Bugfix: Active Directory Account ignored

In some cases Active Directory accounts have not been used to discover member computers.

Bugfix: Postgres Database Instances Not Detected for all Versions

JDisc Discovery did not determine database instances for some Postgres versions.

Release 1.2 - Build 1905

XML Export

JDisc Discovery can export discovered information in an XML file.

Release 1.2 - Build 1903

Running Process Discovery

Build 1903 discovers the list of running processes on all platforms.

Bugfix: Remote Login was hanging in rare cases on Unix platforms

In rare cases, JDisc Discovery's remote login on Unix (either telnet or SSH) was hanging.

Release 1.2 - Build 1901

3COM Device Supported extended

Support for 3COM switches, routers, and access points added.

IBM DB2 Database Discovery

Detects IBM DB2 installations and instances on all platforms.

Identification for H3C (acquired through 3COM by HP) Routers added

Detects H3C (acquired by 3COM by HP) routers.

Identification for Huawei Routers added

Detects H3C (acquired by 3COM by HP) routers.

Show Database Table Size

The database status displays besides the total size the size and the row count for each individual table.

Release 1.2 - Build 1900

New Postgres Release 8.4.4 integrated

The new postgres version 8.4.4 dramatically improves the performance of some

complex custom reports.

Release 1.1 - Build 1571

Driver vendors longer than 127 characters truncated

Driver vendor names longer than 127 characters caused a problem when writing information to the database. Software vendors are truncated to 127 characters to fix the problem.

Release 1.1 - Build 1570

Custom Report can list devices where a software element is *not* installed

Prior to this build, JDisc Discovery's custom reports could list only devices where a specific software element (application, patch, service, application instance) is installed. Now, it is possible to list devices where an element is not installed. This is especially useful to find devices where a particular patch is not installed.

Device Driver Discovery added

JDisc Discovery detects the drivers for Windows, Linux, VMware ESX, Oracle VM Server, and Solaris computers.

Added User Id to user Information

JDisc Discovery stores the user id (on Unix from the etc/passwd file, on Windows the user SID).

Release 1.1 - Build 1567

Experience for first Time Users improved

A new dialog that prompts for the Windows domain administrative account when starting the first discovery helps first time users to get optimal results with their first discovery.

Detect MAC address for Cisco IP Phones

JDisc Discovery detects now the MAC address for Cisco IP phones. The MAC address is important to identify a phone's telephone number in Cisco's call manager.

Open Ports and TCP/IP Connections added to Custom Reports

Open ports and TCP/IP connections could not be used in custom reports. Starting with build 1567, those items can be selected when creating custom reports.

Custom Reports created in some cases a wrong SQL Query

Custom reports created in some cases a wrong SQL query that resulted in a database error.

Release 1.1 - Build 1560

Service Pack Detection on Windows fixed

JDisc Discovery did not detect in all cases the service pack for Windows computers.

Device Name resolution improved

JDisc Discovery improved its capability to detect the name and the major IP address for devices.

Release 1.1 - Build 1557

IP4 Addresses filter in Custom Reports added

JDisc Discovery's custom reports can filter by IP4 addresses.

Release 1.1 - Build 1550

Discover Switches for IBM BladeCenter

JDisc Discovery identifies SNMP based switches for IBM BladeCenter Enclosures and associates them to the correct blade enclosure.

Ping Devices from any Device Report

The Troubleshooting menu within the context menu for devices contains now a new menu item *Ping*. This menu item pings the currently selected devices.

Custom Reports can be organized in a Folder Hierarchy

Custom reports were shown in a flat list. Now, they can be organized in a folder hierarchy to improve usability when using many custom reports.

Release 1.1 - Build 1547

Support for Brother printers and MFCs added

JDisc Discovery identifies SNMP based Brother printers and multifunctional devices correctly.

Support for IBM Infoprint printers added

JDisc Discovery identifies model and serial number for SNMP based IBM Infoprint printers.

IBM AIX Operating System Family problem fixed

A bug introduced in build 1546 identified the operating system family for IBM AIX systems as 'PowerPC'. This bug has been fixed. The operating system family is now again 'AIX' and the operating system system type is 'PowerPC'.

Release 1.1 - Build 1546

Enhance JDisc's Software Discovery with your own Scripts

Use your own scripts to enhance JDisc's software discovery in order to identify your own homegrown applications that do not use the platform's standard installation procedure.

Constraint violation problem fixed when discovering local Users

In rare cases, there has been a database constraint violation when storing local users for a device.

Support for Hitachi Data Systems Disk Arrays

JDisc Discovery discovers SNMP based Hitachi Data Systems disk arrays.

Support for Dot Hill Disk Arrays

JDisc Discovery discovers SNMP based Dot Hill disk arrays.

Release 1.1 - Build 1544

Custom Attribute Data Collection for Windows failed

A problem in JDisc Discovery's custom data collection canceled the discovery for a Windows computer when collecting its custom attributes.

Release 1.1 - Build 1543

Discover Oracle VM Server

JDisc Discovery identifies Oracle VM Servers correctly. Furthermore it associates instances running on Oracle VM Servers with their physical server.

Support for XEN Virtualization

Xen servers and its instances are identified. JDisc Discovery associates Xen instances with their physical server.

“Not set” and “Empty” Condition added to Custom Reports

Conditions in custom reports support now the “Not set” operator and the “empty” operator. Not set means that a field is not set at all. Empty means that a field is either not set or contains an empty string.

Populate Custom Attributes by executing Scripts or Binaries

JDisc Discovery has enhanced its capabilities to fill custom attributes automatically. Besides reading the registry, JDisc Discovery can populate custom attributes by executing scripts, commands, or binaries on target computers. On successful execution, it captures the command output and stores it as custom attribute value.

Release 1.1 - Build 1542

Discover HP BladeSystems

JDisc Discovery detects HP BladeSystem enclosures. Furthermore it detects the blade servers within the blade enclosures and associates them with the BladeSystem enclosure.

Release 1.1 - Build 1541

Client reconnect didn't work

The automatic client reconnect failed when the server shuts down.

Discover IBM BladeCenters

JDisc Discovery detects IBM BladeCenter enclosures. Furthermore it detects the blade servers within the blade center and associates them with the BladeCenter enclosure.

Discover VMware ESX 4.0 and VMware Server 2 are supported

VMware ESX server version 4.0 and the latest VMware server on Linux is discovered

correctly.

Release 1.1 - Build 1540

Sybase Database Version corrected

Jdisc Discovery showed the wrong version (e.g. "0" instead of "15.0") for Sybase database installations.

Discovery Sybase databases on Windows

JDisc Discovery detects now Sybase database installations and its instances on Windows computers.

Release 1.1 - Build 1539

Detection of VMware ESX .Server version

Under certain circumstances the version of VMware ESX Servers has not been detected correctly when using Telnet banner parsing.

Operating System Family set to Linux for VMware ESX Server

The operating system family of VMware ESX Servers has been mistakenly set to Linux when Telnet banner parsing and SNMP have been successful

Perform DNS lookup for Cisco loopback interfaces

Cisco's loopback interfaces are usually used as the management interface. In previous versions, JDisc Discovery did not perform a DNS lookup on the management interfaces. This behaviour has changed. Now JDisc Discovery performs now DNS lookups on loopback interfaces where the IP address does not start with 127.x.x.x.

Discover IBM Blade Center Enclosures

Discover IBM Blade Center Chassis with model, serial number, and operating system version.

Discover Sybase database installations and instances on Unix

Discovers Sybase database installations and its related database instances on Unix (HP-UX, Solaris, AIX, Linux, MAC OS X).

Discover Nokia Firewalls

Identify Nokia firewalls and discover model, serial number, and firmware version.

Release 1.1 - Build 1536

Known port table gets deleted when deleting the database

The known port table defines the mapping between port names and port numbers. This table gets deleted when the database is cleared.

Workaround: Restart the JDisc Discovery service after a database clear. This will populate the lookup tables with default values.

Database size not displayed when application restarted

The database is not displayed directly, when the application gets restarted after a clear, archive, or restore operation.

Workaround: Restart the JDisc Discovery service or wait for approximately 5 minutes.

Client hangs sporadically when trying to log on when server is in startup phase

The client might hang sporadically, when the user tries to log on when the server is in its startup phase.

Workaround: Kill the client processes and wait 2-3 minutes until the server has completed its startup phase.